

# FCSS

Floor Covering Standard Symbols

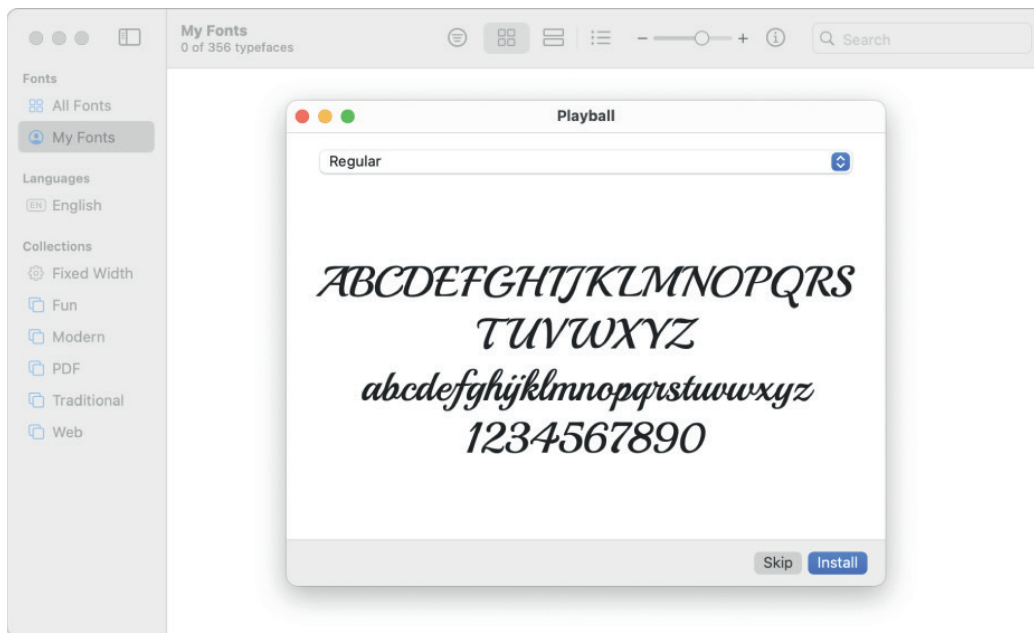
## How to install fonts?

Windows & Mac Os



# Install and validate fonts in Font Book on Mac

To use fonts in your apps, you need to install the fonts using Font Book. When you're installing fonts, Font Book lists any problems it finds for you to review. You can also validate fonts later.



## Install fonts

1. On your Mac, download a font file from Apple or another source.

*Note: macOS supports TrueType (.ttf), Variable TrueType (.ttf), TrueType Collection (.ttc), OpenType and OpenType-SVG (.otf), and OpenType Collection (.ttc) fonts. Legacy suitcase TrueType fonts and PostScript Type 1 LWFN fonts might work but aren't recommended.*

2. Do any of the following:
  - In the Font Book app, choose File > Add Fonts to Current User. In the window that appears, double-click the font file.
  - Drag the font file to the Font Book app icon in the Dock, then click Install in the dialogue that appears.
  - Drag the font file to the Font Book window.
  - Double-click the font file in the Finder, then click Install in the dialogue that appears.

When you install a font, Font Book automatically validates or checks the font you're installing for errors. Font Book also checks for duplicate fonts.

Fonts you install are available only to you, or to anyone who uses your computer, depending on the default location you set for installed fonts.

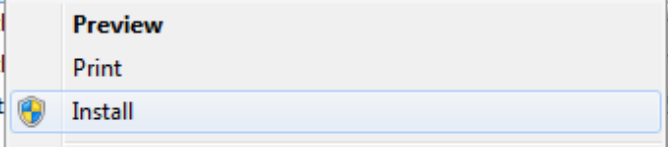
# Install fonts in MS Windows

1. Download the font files. These often come compressed in .zip folders. In one .zip folder, you might find several variations on the same font, such as “light” and “heavy.”
2. If the font files are zipped, unzip them by right-clicking the .zip folder and then clicking Extract. Now you’ll see the available TrueType and OpenType font files:

Name	Date modified	Type	Size
Wolf in the City Light	2/18/2014 9:37 AM	TrueType font file	45 KB
Wolf in the City	2/18/2014 9:38 AM	OpenType font file	20 KB
Wolf in the City	2/18/2014 9:38 AM	TrueType font file	46 KB

3. Right-click the fonts you want, and click Install.

Name	Date modified	Type	Size
Wolf in the City Light	2/18/2014 9:37 AM	TrueType font file	45 KB
Wolf in tl		Type font file	20 KB
Wolf in tl		Type font file	46 KB
wolf_in_t		Zip File	69 KB



4. If you’re prompted to allow the program to make changes to your computer, and if you trust the source of the font, click Yes.

Your new fonts will appear in the fonts list in Word or any other writing program.